

A pioneering study: Applicate Acceptance and Commitment Training (ACT) for junior high school students in Japan

Kotaro SHINDO¹, Honoka MURAMATSU¹, Kazuya INOUE², Tomu, OHTSUKI²

1) Graduate School of Human Sciences, Waseda Univ. 2) Faculty of Human Sciences, Waseda Univ.



Introduction

The purpose of this study, to examine the effect of school based universal ACT intervention.

Table 1 Summary of the Program

	ACT core component	Exercise
Program 1	Value	Clarifying self Values
Program 2	Acceptance	experience the nature of "Mind"—Don't think about sheep —
Program 3	Mindfulness & Comittment	Breathing Mindfully; select one's behavior along value

※Each program took 50min

Method

Participants 116 junior high school students, 62 male and 54 female (M age =12.75, $SD = 0.44$) data were applied for analysis.

Measures

- ① **Avoidance and Fusion Questionnaire for Youth** (AFQ-Y; short version; Ishizu, Shimoda, & Ohtsuki, 2014)
- ② **Japanese Version of the Rosenberg Self Esteem Scale** (RSES-J; Uchida, & Ueno, 2010)
- ③ **Stress Response Scale for Junior High School Students** (Miura, 2002) : This Questioner combined four subitem (Bad mood, Lethargy, Depression/Anxiety, Physical Reaction)
- ④ **Values of Younger Ages scale** (VOYAGE; Ishizu, Ohtsuki, Shimoda, & Takahashi, 2020)

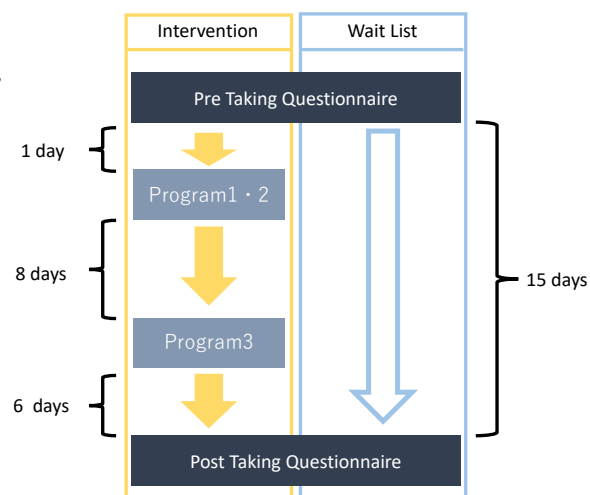


Figure 1 Time course of the Program

Results

Table 2 Mean and standard deviation of each scale score for each group.

		Intervention		Wait List	
		M	SD	M	SD
AFQ	pre	9.44	(5.69)	9.49	(5.35)
	post	9.42	(6.18)	9.02	(6.44)
RSES-J	pre	23.74	(4.86)	23.04	(4.80)
	post	24.34	(5.49)	23.80	(5.11)
Bad mood	pre	2.75	(3.88)	2.88	(4.26)
	post	2.23	(3.92)	2.23	(4.29)
Lethargy	pre	4.10	(4.03)	4.82	(3.73)
	post	4.23	(4.16)	4.09	(4.01)
Depression/Anxiety	pre	3.41	(3.81)	3.34	(3.85)
	post	2.85	(3.66)	2.45	(3.73)
Physical Reaction	pre	1.76	(3.17)	2.20	(3.40)
	post	2.15	(3.59)	1.91	(3.31)
VOYAGE	pre	16.61	(7.01)	16.09	(7.26)
	post	16.74	(6.83)	15.43	(7.84)

Table 3 Main effects and interactions of time and group for each scale.

	F		
	main effect		Interaction
	Period	Group	
AFQ	0.500	0.796	0.662
RSES-J	0.045 *	0.617	0.841
Bad mood	0.023 *	0.913	0.743
Lethargy	0.264	0.640	0.066 †
Depression/Anxiety	0.010 **	0.681	0.626
Physical Reaction	0.712	0.852	0.131
VOYAGE	0.498	0.496	0.470

† $p < .10$, * $p < .05$, ** $p < .01$

- We conducted Linear mixed model. As shown in the table above, no interaction was demonstrated.
- No obvious results that show the effects of ACT intervention.

Discussion

- In the first year of junior high school, discrimination of private events was low, and the effects of the psychoeducational program may have been limited.
- The effect of the timing of the intervention may have prevented the expected results from being achieved.